

# Late Model JD & Case IH Farm Equipment ESTATE AUCTION

**Saturday, February 15, 2020 • 10:30 A.M.**

LOCATION: 635 E 1st Street, Wahoo, Neb., Saunders County Fairgrounds, Indoor Heated Pavilion

*Blizzard Date-Saturday February 22*

**Sale Order: Starting with shop tools/equipment, Noon on major equipment! • Lunch: Served by the Wahoo VFW Veterans Auxiliary**

**Preview: Pre auction by appointment only or in Wahoo, Wednesday through Friday, 9 a.m. to 6 p.m. week of auction.**

*Items must be removed from the fairgrounds within one week!*

ONLINE BIDDING offered by **Equipmentfacts**

Powered by TractorHouse.com, MachineryTrader.com, TruckPaper.com & MarketBook.com



## TRUCK

'04 Ford Super Duty F-250 4x4 Ext. Cab, 6.0L Powerstroke diesel, auto., new MB 17" alum. rims & BFG tires w/Bradford 8' alum. flatbed, front under bed storage boxes, 4" fold down sides, flush mount floor D-rings, chain keyholes, GN & receiver hitch, LED lights, 181,888K

## COMBINE

'08 Case I-H 2588, S#HAJ305382, AFS Pro 600 monitor w/GPS, field tracker, bin extension, bubble up auger, chopper, rock trap, 21" unloading auger w/auto. oiler, SPH, 480/80R42 front duals, 19.5Lx24 rears, 1958 eng./1376 sep. hrs., 2nd owner w/yearly inspections, 119 hrs. on new engine, always shedded, 12R field ready

**Heads:** '08 Case I-H 2208 8RN Corn Head, full poly, adj. deck plates, auto. height control, field tracker, SPH, light pkg., S#CBJ24615; '13 Case I-H 1030 H03 25' Flex Head, field tracker, SPH, light pkg., S#JC0331424

**Header Trailers:** '10 UM HT-30' w/light pkg.; '10 UM HT-25' w/light pkg.

## TRAILER

2012 H&H 8'x12' Aluminum Open Side Rail, bi-fold rear gate, alum. rims, LED lts. (one owner)

## MISCELLANEOUS

Case I-H 3 Grain Moisture Tester  
Dolmar 16" Chain Saw  
6' Step Ladder  
TKO Degreaser, Asst'd JD & Case I-H Filters, 5 Star Glass Cleaner/Dry Moly Lube & Brake Clean, Roll & Cotter Pins, Grease Zerk, Hair Pins, Metric Bolt Set, O-Ring Set, Drill Bits, Bit Drivers  
Large T75 30' Tow Rope  
Assorted Chains & Binder  
Johnson Mdl.242-7610 & 242-7162 Low Band Radios



## TRACTORS

'10 Case I-H 305 Magnum MFWD, S#ZARZ02899, 19x4 PS trans., AFS Pro monitor, GPS guidance, premium heated seat, buddy seat, full set front wts., 4 remotes, 1000 PTO, Cat 3 QH, 480/80R50 rear duals, 380/80R38 front duals, 3189 hrs., sharp!

'07 JD 9420 4WD S#P051830, Green Star 3 GPS guidance auto. trac ready, 18F6R PS, 4 remotes, diff. lock, bareback w/ Cat.4 drawbar, HID Xenon lights front & rear, external mirrors, air suspension seat, rear inner wheel wts., 710/70R38 duals, 7316 hrs. (clean)

JD 4840, S#014778, 8-spd. PS, 3 remotes, frt. wts., Cat. 3 QH, 18.4Rx42 Firestone rubber w/duals, 6991 hrs. (nice)

JD 4010 Diesel, S#29049, WF, 3-pt., dual hyd., rear wts., ROPS, 18.4x38 Firestone rears, 10,386 hrs.

JD 4010 Diesel, S#32503, WF, 3-pt., dual hyd., rear wts., 16.9x38 Firestone rubber, JD 158 QT loader w/86" bucket (loader sold separately) 10,282 hrs.

**Accessories:** JD 540/1000 PTO Shafts, 10 JD Suite Case Wts, Speeco & Hiniker Cat II Quick Hitches, 2) Gnuse Hyd. 3rd Links, Case I-H Cat.III 3000psi Hyd. 3rd Link

## TILLAGE

'06 Case I-H RMX-340 34' Tandem Disk, walking tandem main frame, 9" spacing, 21" blades, 3-bar coil tine harrow, light pkg., S#030350 (one owner)

'12 Case I-H Tiger Mate 200 46' Field Cult., walking tandems, double folding wings, 9" sweeps, 4-bar coil tine harrow, light pkg., S#0045987 (one owner)

Case I-H Flex-Till 600 33' Chisel, walking tandems, all new knives, light pkg., S#YCS003447 (one owner)



## EQUIPMENT

'12 Brent 1082 Grain Cart, S#B29040147, hyd. adj. spout, backup camera, scale, roll tarp, light pkg., 35.5Lx32 floatation tires (nice!)

DMI 5250 17 Knife 30" Double Folding Tool Bar, covering discs, walking tandems w/ Raven Accu Flow controller & SES 440 monitor

Rhino SE15-4 Batwing Shredder 3-Pt. 12' Hyd. Dump Gnuse Scoop w/top extension, good bit (one owner)

Sudenga Mdl. PC-317 Drive Over Pit, hyd. drive  
**Peck Augers:** Mdl. 1204 12"x72' Hyd. Swing Hopper, PTO, hyd. lift, S#113-17743; Mdl. 1004 10"x71' Swing Hopper PTO, hyd. lift, S#604-14286; Mdl. 1002 10"x31' Elec., S#705-14700 Gnuse Mdl. 40 Single Stage 3-Pt. Forklift, 48" forks

Krause Mdl. 959A 27' Tandem Disk, 8" spacing, S#2728

I-H Mdl. 700 Pull-Type 7 Bottom On-Land Plow, S#002494 (good cond.)

I-H Mdl. 700 3-Pt. Semi Mount 7 Bottom On-Land Plow, S#033470

JD 6 & 4 Bott. Semi Mount Plows

Big Ox 3-Pt. 7 Shank V-Ripper

Brady 15' PT Stalk Shredder

Huskee Gravity Wagon

2) 1000-Gal. & 2) 500-Gal. Fuel Barrels on Skids, one w/Fill-Rite HD Mdl. 311V 115/230v elec. fuel pump w/meter, other w/110v elec. fuel pump

**Older Equip:** JD 12' PT Chisel; I-H 16' Vibra Shank Field Cult.; I-H #183 8RN 3-Pt. Cult.; JD 4 Bott. PT Plow; JD AW 13' Tandem Disk; I-H 2 & 3 Bott. PT Plows; Mayrath 8"x31' PTO Auger

150-Gal. 12v Pickup Fuel Tank

**OTHER ITEMS  
NOT LISTED!**



## PLANTING

'14 Case I-H 1245 Early Riser Split Row 31R/16 Split 15" Spacing, central fill dual hoppers, markers, pneumatic down pressure, PTO drive, vacuum meters, row shutoff's, flex fold, Yetter openers, narrow pivot transport, S#YES052241 (one owner)

'13 Meridian 275-Bu. Dual Compartment Seed Tender, hyd. gates/swing auger, tandem axle trailer, Honda elec. start, wireless remote w/scale & roll tarp (1 owner, ex.cond)

## SHOP EQUIP./ TOOLS

Twin Wheel Barrel Portable Air Comp. w/5-h.p. Honda  
Alkota 110V Diesel Fired Pressure Washer w/hose reel

Hypertherm Max 100 Plasma Cutter, 220V Smiths Cutting Torch Lg. Bottles w/cart

Air Products AC/DC 250amp Arc Welder

Older Emerson Electric 180amp Arc Welder

Floor Model 16-Spd. Drill Press w/5/8" chuck

Makita 14" Chop Saw

Waterloo 11-Drawer Top, 12-Drawer Bottom Tool Chest

**NOTE:** Steve was a lifelong farmer who took pride in keeping up to date on his equipment but also keeping things shedded, maintained and in top running condition. His impeccable desire to till the soil was unmannered and the ability to strive forward with things no one else would. Don't miss this chance to purchase clean one & second owner farm equipment that has been very well maintained & shedded!

**Steve Hergenrader, Estate  
Cynthia Hergenrader, Owner**



## TOOLS

Tool Shop Self-Leveling Laser  
Gear Ratchet Vortex Socket Set  
OTC 8-Pc. Snap Ring Pliers Set  
BenchTop 100-Pc. Tool Set  
T Handle Allen Wrenches  
JD 1/2" Dr. SAE Dw/Sw Socket Set  
Craftsman 10-Pc. 3/8" Socket & Screwdriver Set  
JD Std. & Metric 8-30 Comb. Wrench Sets  
Assorted 1/4" 3/8" & 1/2" Ratchets & Extensions

3/8" Torx Set T10-T70

3/8" Allen Set 4mm-17mm, 5/32-5/8

Nut Drivers

1 1/4, 1/ 3/8, 1 1/2, 1 5/8, 1 3/4, 1 7/8 & 2" Comb. Wrenches

Die Grinder

3/8" & 1/2" Impacts

Proto 2 Jaw Puller

JD 3/8" Metric Socket Set

14pc DW 1/2" Impact Socket Set

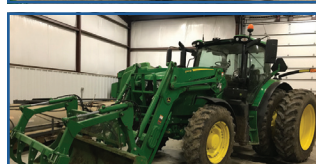
Gear Wrench 5/8"-1 1/4"/15mm-32mm Set

12V Lincoln Grease Gun

Elec. Grinders & Drills

KT 3/4" Dr. Socket Set, 1 other

Assorted Vise Grips, Crescents, Hammers, Chisels, Punches, Pliers, Pry Bars, Files



## TRACTORS

JD 8225R MFWD, S#PAP010735, 16-spd. PS, active deluxe seat, buddy seat, 4 outlets w/Power Beyond, 1000 PTO, Cat.III QH, Firestone 480/80R46 rears w/duals, new Firestone 380/85R34 fronts, frt. fenders & wts., light pkg., 2145 hrs. (one owner)

JD 6155R MFWD, S#EFD022416, auto power IVT transmission, left hand reverser, joy stick control, 7" color touch display, active deluxe seat, sun roof, foot throttle, 3 outlets w/Power Beyond, Cat.II QH, 540/1000 PTO, 480/80R42 rears w/duals, 380/85R30 fronts w/fenders, light pkg., 891 hrs. w/JD 640R QT loader, 8' bucket, 5 tine grapple (one owner)

## PLANTING

'04 JD 1690 CCS Seed Metering 32 Shoe 15" Spacing 40' Air Seeder, Green Star swath controller, cast closing wheels, monitor, S#S705211, field ready!

## TRAILER

'83 Colt 42' Grain Trailer, roll tarp, good 11R24.5 rubber, GVWR, 63,000

**Myron & Mike  
Gerdes, Owners**



**WELTON AUCTION INC.**  
**2154 COUNTY ROAD 22**  
**MALMO, NE 68040**

RETURN SERVICE REQUESTED

## AUCTION

Saturday, February 15, 2020  
Wahoo, Neb.

Presorted Standard  
U.S Postage  
PAID  
Permit No. 11  
Malmo

**Terms:** Complete payment is due day of auction by cash, certified check. Company and or personal checks are accepted if accompanied by a bank letter of credit guaranteeing the funds. Nothing removed until settled for! Not responsible for accidents, injury or theft. All items sell to the highest bidder "as is, where is, with all faults, no warranties." Information and descriptions are believed to be accurate, however, Welton Auction Inc. makes no guarantees as to the accuracy. All announcements day of sale take precedence over anything printed, written or implied. Welton Auction Inc. are agents only.

**Welton Auction Inc.**  
**Ryan & Mary Welton, 402-663-5270**

*Big Enough To Help You,  
Small Enough To Know You.*

[www.weltonauction.com](http://www.weltonauction.com)

**For complete list and color photo, visit our website as:**

**[www.weltonauction.com](http://www.weltonauction.com)**

**[www.midwestmessenger.com](http://www.midwestmessenger.com)**

**click on sale bills**